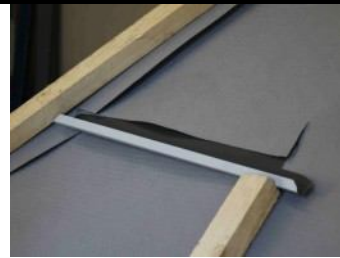




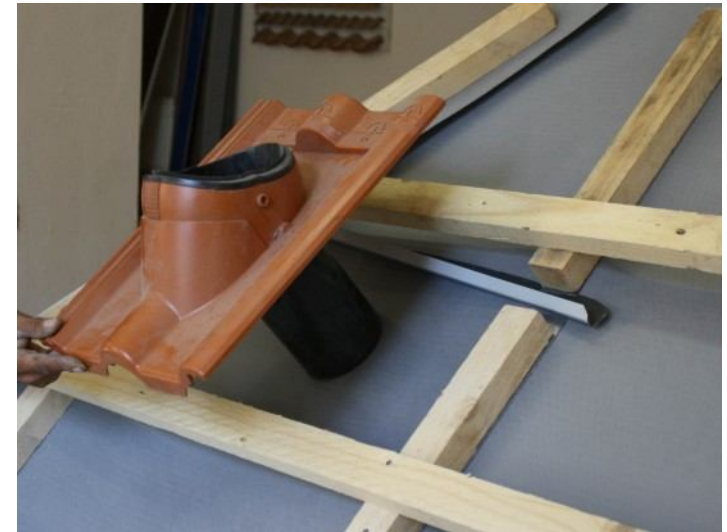
4.1 cut through the membrane and disconnect counter batten



4.2 install drainage ditch



4.3 drainage ditch



4.7 ventilation tile placed under the drainage ditch



4.4 stick membrane on drainage ditch with tape JTD SP 38



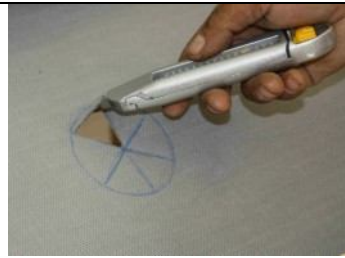
4.5 sealed counter battens with tape JTD TPK SUPER



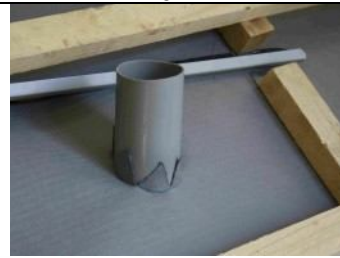
4.6 add upper counter batten so the drainage is functional



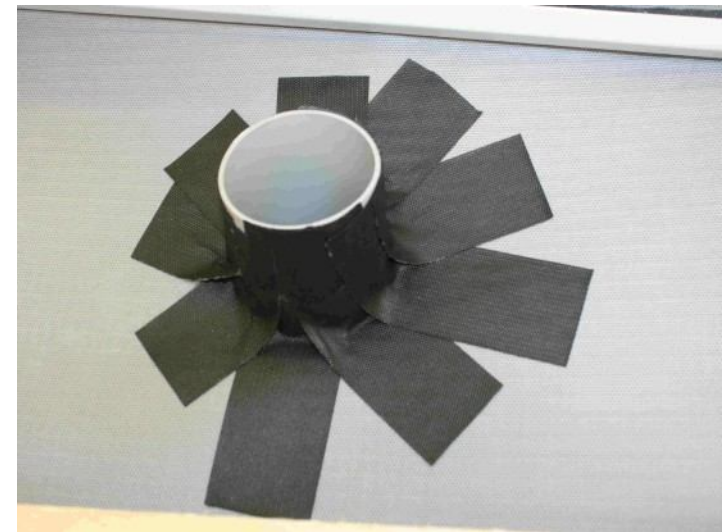
4.8 retrace the circular penetration on the membrane



4.9 make star-shaped cut through the membrane



4.10 circular penetration – top view



4.14 sealed circular penetration through the membrane

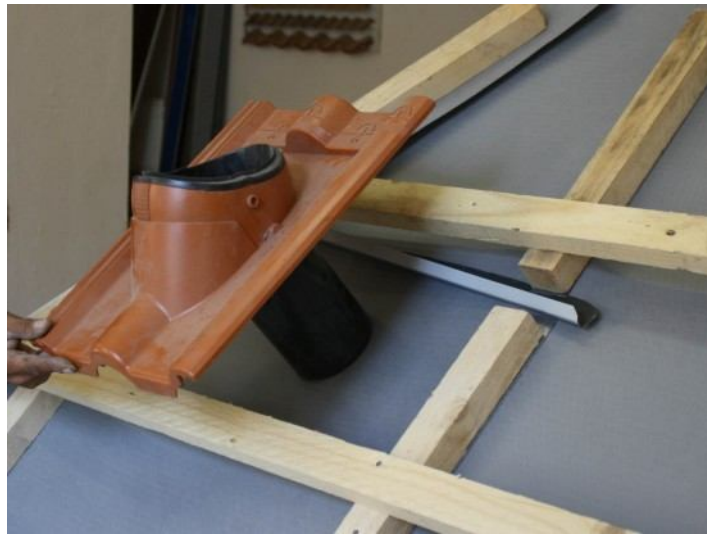


4.11 circular penetration – bottom view

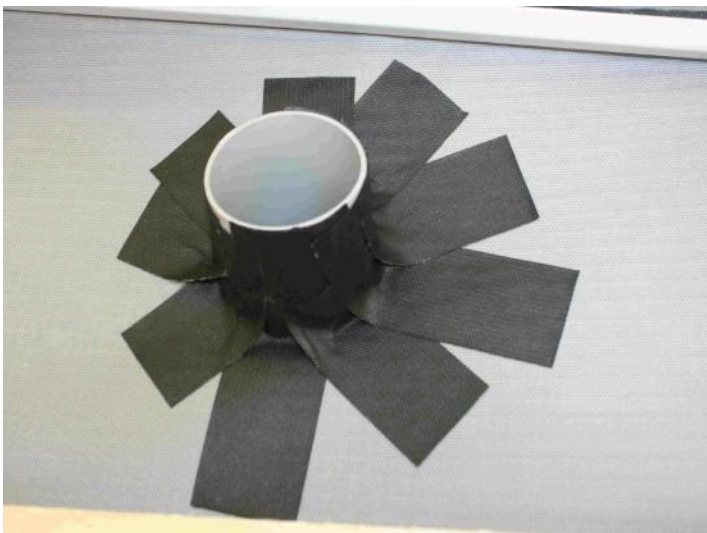


4.12 - 4.13 use the tape JUTADACH SP SUPER to seal the circular penetration – start at the bottom and continue upwards





BREATHABLE WATERPROOF MEMBRANE –penetration
ventilation tile placed under the drainage ditch



BREATHABLE WATERPROOF MEMBRANE –penetration
sealed circular penetration through the membrane

BREATHABLE WATERPROOF MEMBRANE –PENETRATION

- Lay down breather roofing underlay horizontally (or vertically) across the roof slope over insulation or rafters. Start from the gutter side of the roof upward to the ridge, with overlaps of min. 10 cm (depends on the slope). Vertical connection of the membrane must be made over the rafter.
- The membrane is fixed to the boarding or rafters with non corrosive flat-headed nails or staples and only over the overlapping area.
- Counter battens are installed over the underlay and should not exceed 1,2 m. In case of roof slope under 22°, and in valley between roofs the sealing of counter battens with tape JUTAFOL TPK is recommended. To create rain-resistant roof construction, sealing of counter battens with tape JUTADACH TPK SUPER is necessary. (pic. 1.13-1.19).
- Above the penetration the drainage ditch is necessary.
- First cut through the membrane and disconnect the counter battens, (Obr. 4.1-4.3) Than install drainage ditch and stick the membrane with tape JTD SP 38 on it (Obr. 4.4).
- Above the drainage ditch add upper counter batten so the drainage is functional. Seal the counter battens with tape JTA FOL TPK or for rain-resistant roof construction JUTADACH TPK SUPER (Obr. 4.5-4.7)
- CIRCULAR PENETRATION - retrace the circular penetration on the membrane, make star-shaped cut through the membrane. (Obr. 4.8-4.11).
- Use the tape JUTADACH SP SUPER to seal the circular penetration – start at the bottom finish at the top.